

# CPMS Newsletter

## “As the Wrench Turns”

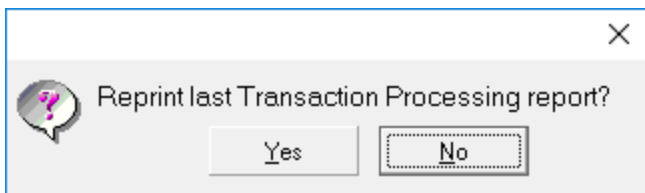
Volume 25, Issue 1

January 2019

### Version 4.49 update

We are sending out a new version of CPMS, however since most of the changes are minor enhancements or corrections, you may decide to wait until after the holidays to load them.

We always encourage our users to let us know if they see a problem or have a suggestion so we can hopefully include it in the next update. For example, when you run Part Transactions and are printing out the Part Transaction Processing Report, what can you do if you have a paper jam, your PC locks up, or you are logged out as a remote desktop user? There should be a way to print out the last Part Transaction Processing Report. And now there is.



The report is available until the next time you process your Part Transactions. (Thank you Mike Wagner at Klosterman Baking Co.)



### Do you need help loading or correcting your PM duties?

Most of our customers are doing a good job with regard to generating, printing and processing their PM work Cards. The challenge is to make sure you are providing the right instructions to the mechanics at the right time.

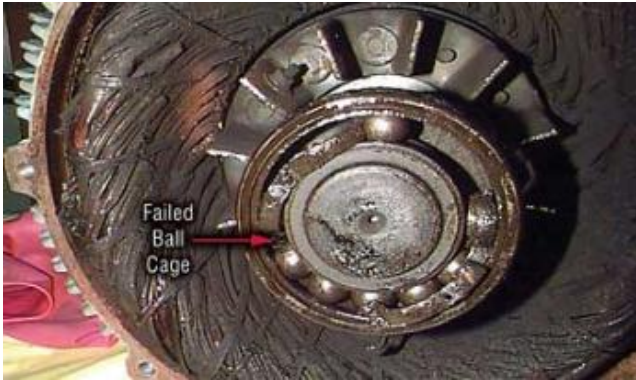
Examples of sources for your PM Duties: Equipment manufacturer manuals; the mechanics' real world hands on experience; and equipment failure reports.

If you are properly documenting equipment problems, and carefully recording what can be done to prevent reoccurrences, this is a great place to get critical preventive maintenance instructions. That, along with a good lubrication schedule, should prevent a lot of problems.

### INSIDE THIS ISSUE

- 1 Version 4.49 update
- 1 Do you need help loading your PM duties?
- 2 What is a Relational Database?
- 3 And the Winner is...
- 3 CPMS Quiz

It goes without saying that there never seems to be enough time to do all of the PM you feel is necessary in order to keep your equipment running properly. This usually requires a more proactive approach to PM scheduling. You can't afford to wait until your down day to look for equipment problems. The secret ingredient: Running PM inspections which can be performed safely when the machine is running.



Consider all of the moving parts in your plant that require proper lubrication, adjustment or possible replacement. It's amazing the equipment works as well as it does! Here are some examples of the wrong way to run a PM program:

Plant A- PM work cards are generated and turned in every week. The work is shown as complete even though a lot of it was not done, not done properly, or only partially done.

Plant B- The PM work cards reflect what the mechanics should do but is unrealistic as to what they can do.

Plant C- The PM instructions have never been validated. They are inaccurate, provide too much or too little detail, and/or assigned to the wrong PM frequency.

In these examples the problem arises when you have a plant audit. Typically, if you can provide proper documentation that the PM's have been completed on schedule, that will usually be sufficient for the auditor but it doesn't help faulty equipment.

Ultimately your equipment will let you know if your documentation matches the PM's shown as complete. One of our customers provided a good example of PM scheduling versus equipment failures. The equipment failure reports showed a lot fewer failures at plant A than at plant B and they were getting almost all of their PM's done. But, plant B was more efficient and their production numbers were much better. A closer look showed that plant A was not recording many of their outages and their actual PM completion percentages were much lower. This highlights the importance of accurate reporting and making sure that PM work cards are randomly reviewed each week.

**SAVE PRODUCTION DOWNTIME & MAINTENANCE COSTS**



What can you do? We provide a free service to work with you to rebuild your Master Schedule and make it right.

## **What is a relational data base?**

CPMS, as do most CMMS programs, uses a relational database management system. With newer models of PC's, laptops, and smart phones coming on the market every month, it is hard to imagine that the system design used to manage your data was developed almost 50 years ago. And it still works great!

You see this in CPMS where by knowing just a part, employee, or equipment number you can run dozens of reports using all the data that is related to that item. This shows the importance of keeping your database error free and all related data intact if you decide to delete a *key column* such as an employee, part or equipment number.

CPMS has numerous checks and rules to help you avoid accidentally “shooting yourself in the foot”. We computer nerds refer to this as *referential integrity*. You see it when you are on the Equipment screen form and try and delete an equipment number even though there may be hundreds or thousands of rows of data which refer to that number.

Your reports are only as good as your data. Consider starting off the New Year with a better database by using the Self Audit utility functions to help you locate and correct any errors which may provide misleading information. It would be our pleasure to walk you through those reports.

### **And the Winner is...**

No one sent in the right answer to our last CPMS Quiz. And the question was: What’s a blanket PO?

Using the PO module you can create a blanket PO to lock in a vendor price- typically for a year. For example, you are buying twelve widgets this year but you only want to purchase three each quarter. Make a PO for all twelve and then use the partial receipt option to receive three and back order the balance each quarter using the same PO number.

### **CPMS Quiz**

#### **For \$100**

How could you easily determine the average amount of time it took to do the monthly PM on a critical piece of equipment over the past two years?

\*\*\*\*\*

*Dennis Fleming*  
IISCO

101 High Circle, Suite 8G  
Myrtle Beach, SC 29572  
Cell: 570 351-5290  
E-mail: [iisco@ptd.net](mailto:iisco@ptd.net)  
[www.TheBestCMMS.com](http://www.TheBestCMMS.com)

