

# As the Wrench Turns

## CPMS User's Journal

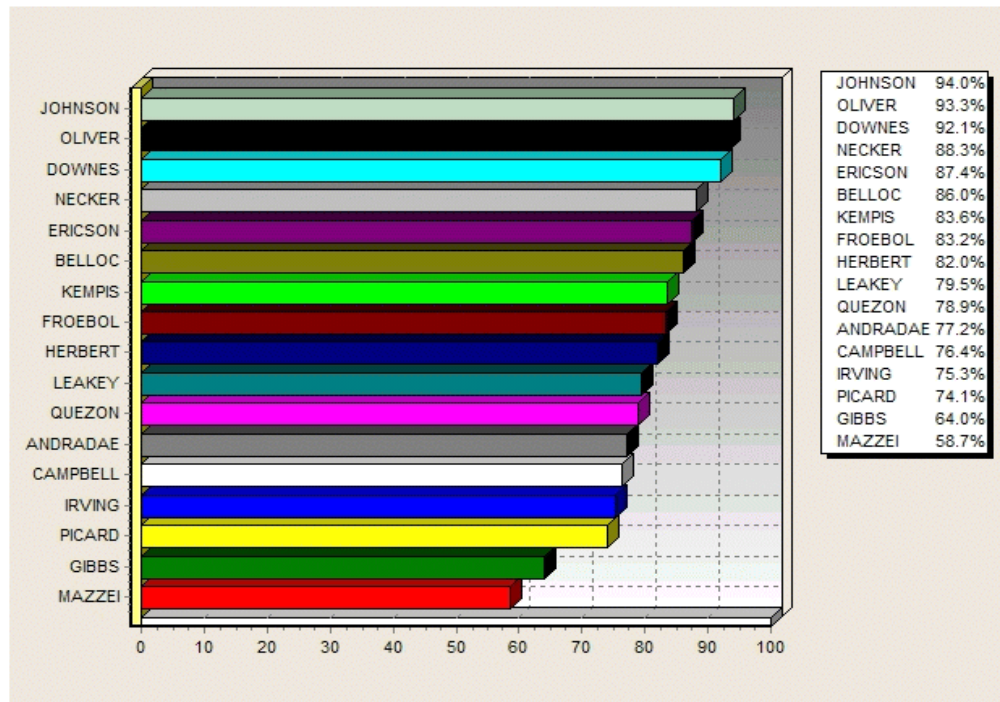
### CPMS 4.0 - Almost Ready!

Your Plant Name  
June 29, 2004

*PM Efficiency*

Page 1 of 1  
12:19 PM

From: 05/31/04 To: 06/28/04



#### CONTENTS

<i>CPMS User's Journal</i> . . . . .	1
<i>RCharts</i> . . . . .	1
<i>RSpell</i> . . . . .	3
<i>And the Winners are...</i> . . . . .	4
<i>Welcome!</i> . . . . .	4
<i>CPMS Quiz- \$100 prize every quarter!</i> . . . . .	5

#### RCharts

Some long-awaited tools have been added to CPMS and we are sure that you will benefit from them as much as we have enjoyed in incorporating them into CPMS 4.0.

You are familiar with the Work History Summary report which lists each mechanic and his PM and Work Order completion percentages.

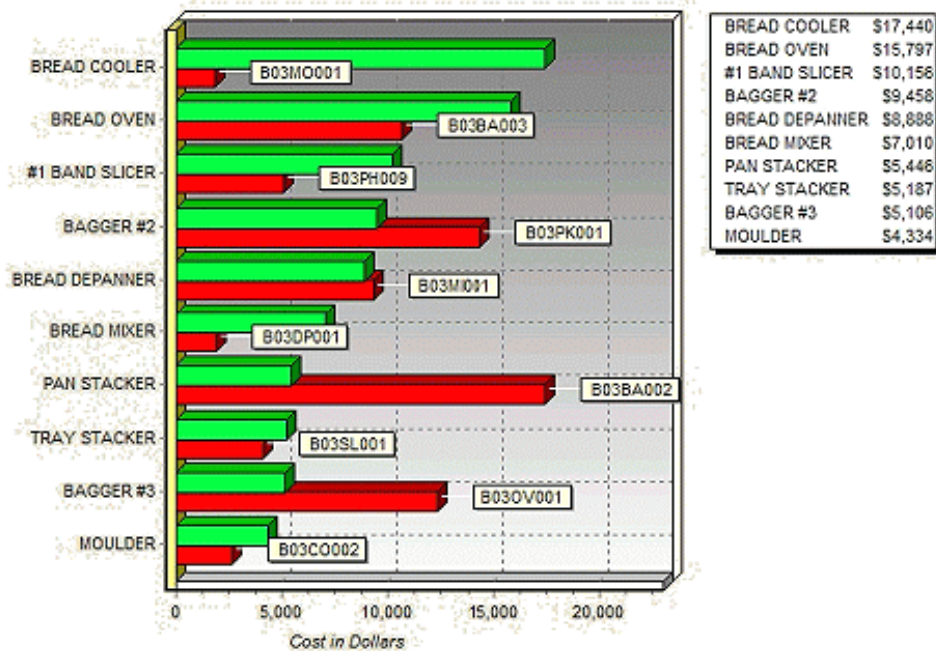
This is useful information, but, as you can see in the above graph, what better way to motivate your crew than to have a "Top Ten" list in the same way we do for equipment.

Your Plant Name  
June 29, 2004

## Top Ten Report

Page 1 of 1  
12:13 PM

From: 01/01/01 To: 12/31/01 All Cost Categories



<u>Unscheduled Downtime on Top Ten</u>		<u>Equipment (hours)</u>	<u>Manufacturing (hours)</u>
B03CO002	BREAD COOLER	4.28	2.63
B03OV001	BREAD OVEN	19.98	17.92
B03SL001	#1 BAND SLICER	6.60	0.03
B03BA002	BAGGER #2	28.27	0.07
B03DP001	BREAD DEPANNER	3.05	1.92
B03MI001	BREAD MIXER	15.07	9.88
B03PK001	PAN STACKER	23.25	1.45
B03PH009	TRAY STACKER	8.20	0.15
B03BA003	BAGGER #3	17.25	0.20
B03MO001	MOULDER	3.00	2.17

Our Top Ten Report of troublesome equipment has been around for a long time, but it has never looked this good. We may still do a little tweaking with this report, but it will still show that there is usually a correlation between your most costly machines (green) and those which have the most equipment and manufacturing downtime (red).

Note in all the new reports that the plant name, expanded date, and time are now printed. In addition, page X of Y always shows you what page of how many pages are in each report. All these "little things" make a big difference in a happier user. And, what you don't see is that you can determine the desired output and format of the report. Great for email attachments.

The new selection screen for the Top Ten Report has a popup calendar menu for the start and end dates. What is really helpful is that you can now enter the last two digits of the year but still see the full four digits. This avoids mistakes which are possible when entering just the last two digits.

There is also a drop down menu for both the start and end of the equipment number range. This will allow you to easily select a smaller group of equipment numbers such as all the wrapping equipment.

## RSpell

Another new feature is the Spell Checker. This is a capability many of us have been looking forward to in CPMS which will check for misspelled words in the Parts and Equipment Notes, in PM Duties, and in the

Work Order Description, just to name a few.

For both graphs and spell checking, it is important that we can do this entirely within CPMS. Over the years when we have looked at third part products, one of the drawbacks is that it would force all of our customers to use the same program and, in some cases, even the same version in order to be compatible. We're glad those days are over.

Equipment

Equipment Number: A03AD002

Description: AIR DRYER

Location: COMP RM

Manufacturer Ident: KAESER

Manufacturer: KAESER COMPRESSORS

Serial Number: 1001

Model: TE 141

Size: 575V 3PH 3.5A

In Service:

Asset Number:

Account Number:

Purchase Date: 10/04/2002

Original Cost: \$9,385.00

Equipment Notes: PART# 1.8039.00020, YEAR 2001, REFRIGERANT R134a, CHARGE 4.65 lb, WORKING PRESSURE HP. 260 PSIG, WORKING PRESSURE 230 PSIG, AMBIENT TEMPERATURE MINIMUM 40 F/ MAXIMUM 110 F, 520 SCFM.

PM Schedule

PM Schedule	Frequency	Next	Employee
A DAILY ELEC	7	@ 01/25/03	PLANT
E 3 MONTHS	91	@ 04/19/03	E4
G ANNUAL ELEC	364	@ 11/01/03	LEAD
M MONTHLY	28	@ 01/25/03	E4

Motors Gear Boxes Parts Used Part X-Ref Failures Work Orders Work History

Now, anytime you see the "Green Arrow" just click it to spell check your data entry. You can even add all of your technical terms and abbreviations to create a customized dictionary just for your Maintenance department.

## And the Winners are...

Renee Gable from Canada Bread, Langley BC; Cindy Like from Lewis Bakeries, Vincennes IN; Sandra Deal from Lewis Bakeries, Evansville IN; and Jeff Marshall from Perfection Bakeries, Fort Wayne, IN. Congratulations for solving last month's quiz.

The question was, "...print out the standard Parts Inventory report to take to the spare parts room and find all the parts which have no activity this century, with no price, and at least one on the shelf."

Your condition would be:

```
PR_ONHD > "0" AND (PR_LTRNS < "01/01/01"
OR PR_LTRNS IS NULL)
```

And, you should sort your report by part location to facilitate finding the parts. Notice above that the last transaction date is blank up until the first activity for a part. This question pointed out a possible problem where a part which was just added yesterday with no activity would have the same blank last transaction date as a part added years ago with no transactions.

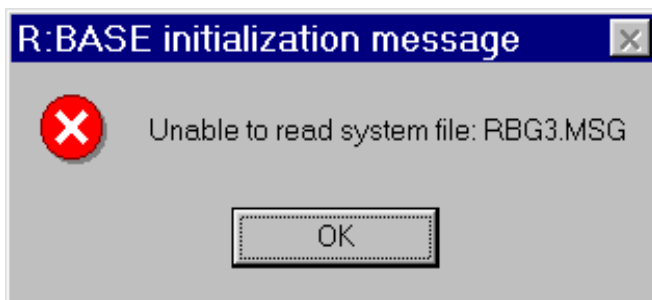
## Welcome!

Gordon Swindells from Weston Bakeries in Calgary, ALB and Don Temple from Weston in Langley, BC.

## CPMS Quiz- \$100 prize every quarter!

It's not easy giving away money these days. Actually that's not true, but for the benefit of our new customers please note that there is a \$100 prize for our quiz each newsletter.

OK, the quiz. This is directed toward network users, but even single PC users may have seen the message below when starting up CPMS:



What is the most likely cause?

\*\*\*\*\*

Dennis Fleming  
IISCO

2337 Hemlock Farms  
Hawley, PA 18428  
Tel.: 570 775-7593  
Fax: 570 775-9797  
Cell: 570 351-5290  
E-mail: [iisco@ptd.net](mailto:iisco@ptd.net)  
[www.TheBestCMMS.com](http://www.TheBestCMMS.com)